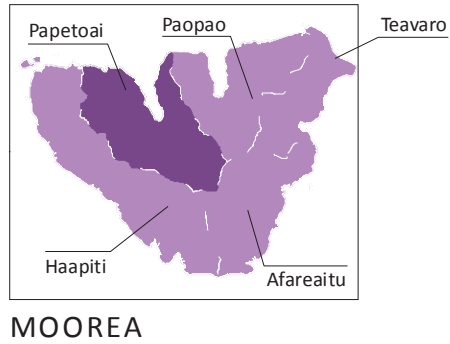
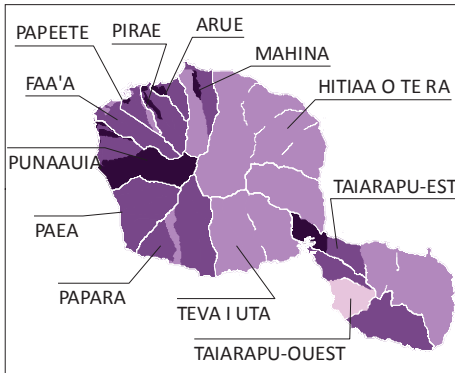
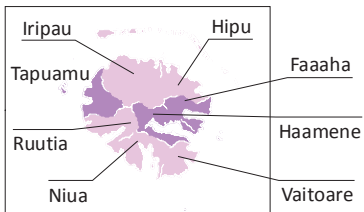


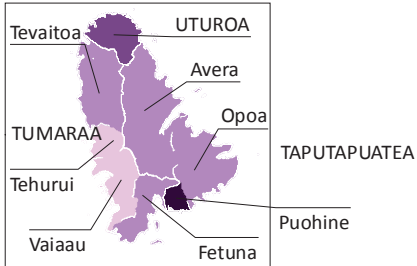
# Diplôme Scolarisation des 19-20 ans



## TAHITI

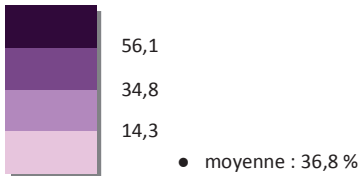


## TAHAA



## RAIATEA

Taux (%) rapporté à la population de 19 à 20 ans



## MOOREA

## Archipel de la Société

## Archipel des Marquises

## Archipel des Tuamotu - Gambier

## Archipel des Australes

## HUAHINE

## BORA BORA

## Fare

## Fiti

## Maroe

## Haapu

## Parea

## Faanui

## Anau

## Nunue

## Nuku Hiva

## Ua Huka

## Hiva Oa

## Ua Pou

## Tahuata

## Fatu Hiva

## Manihi

## Rangiroa

## Takarua

## Napuka

## Pukapuka

## Fangatau

## Makemo

## Maupiti

## Bora Bora

## Tahaa

## Huahine

## Arutua

## Fakarava

## Anaa

## Hikueru

## Tatakoto

## Reao

## Moorea - Maiao

## Hao

## Nukutavake

## Tureia

## Gambier

## Rimatara

## Rurutu

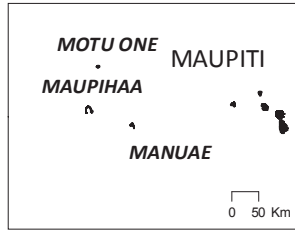
## Tubuai

## Raivavae

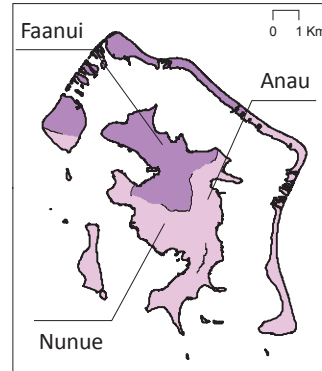
## Rapa



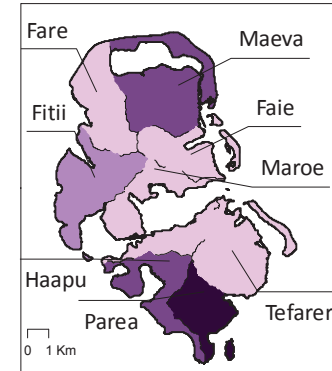
# Diplôme Scolarisation des 19-20 ans



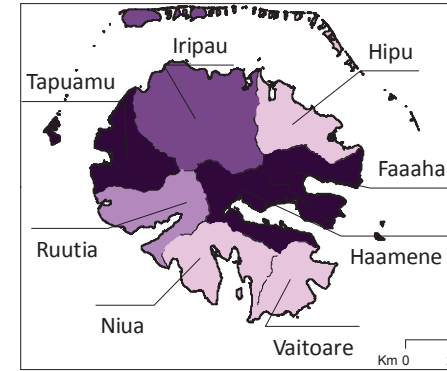
MAUPITI



BORA BORA



HUAHINE



TAHAA



TUPAI

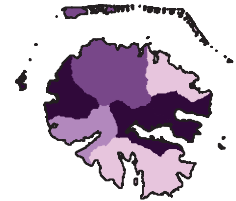


MAUPITI

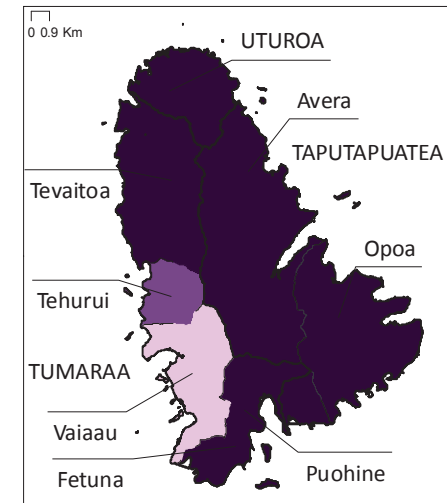
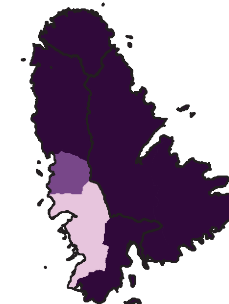
BORA BORA



TAHAA

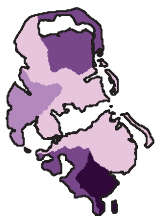


RAIATEA

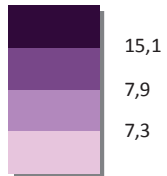


RAIATEA

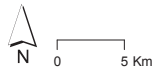
HUAHINE



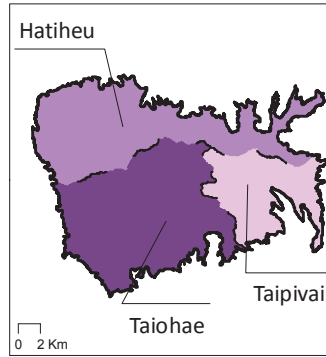
Taux (%)  
rapporté à la population de 19 à 20 ans



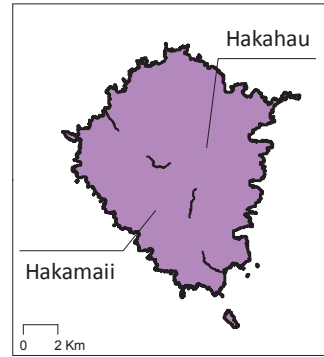
● moyenne : 15,9 %



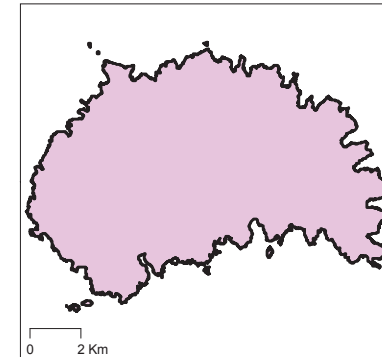
# Diplôme Scolarisation des 19-20 ans



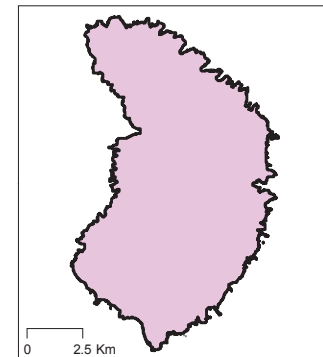
NUKU HIVA



UA POU



UA HUKA



FATU HIVA



NUKU HIVA



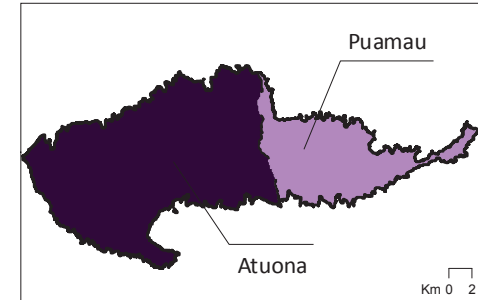
UA HUKA



UA POU



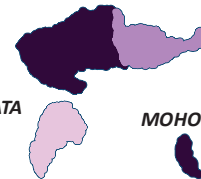
HIVA OA



FATU HUKU



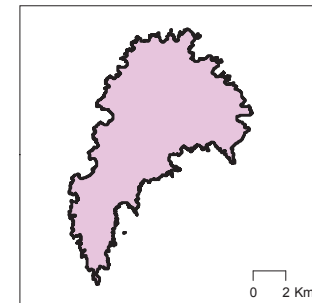
HIVA OA



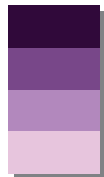
TAHUATA

MOHOTANI

TAHUATA



Taux (%)  
rapporté à la population de 19 à 20 ans



19  
12,5  
4,3

● moyenne : 12,3 %

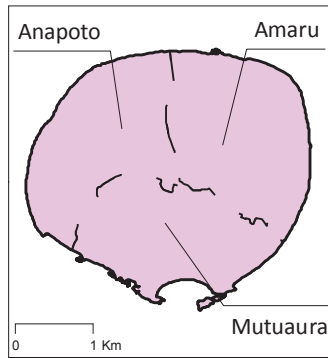
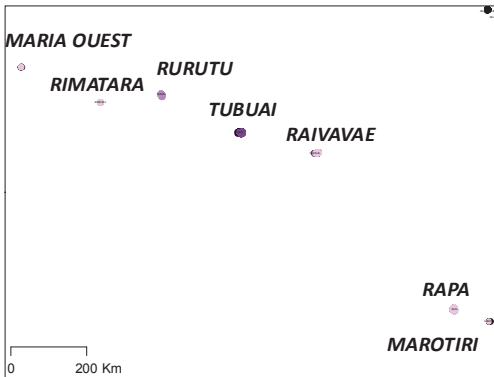


FATU HIVA

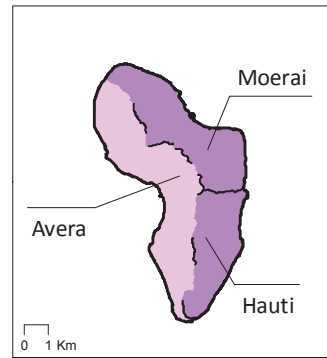
ROCHER THOMASSET



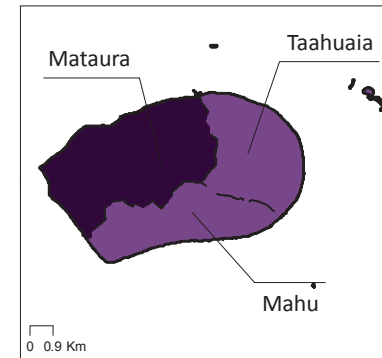
# Diplôme Scolarisation des 19-20 ans



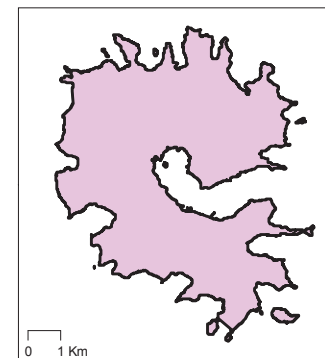
RIMATARA



RURUTU



TUBUAI



RAPA

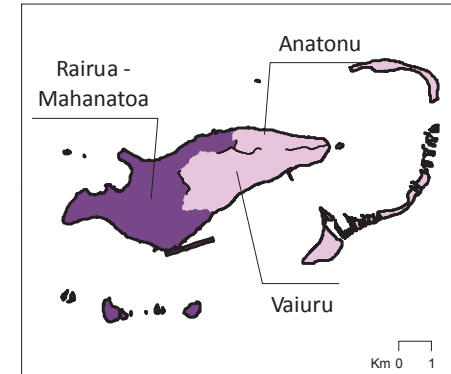


RURUTU



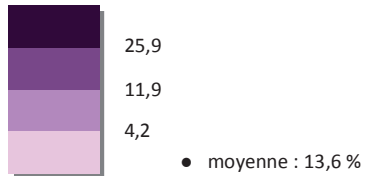
RIMATARA

RAIVAVAE



RAIVAVAE

Taux (%)  
rapporté à la population de 19 à 20 ans



# Diplôme Scolarisation des 19-20 ans

